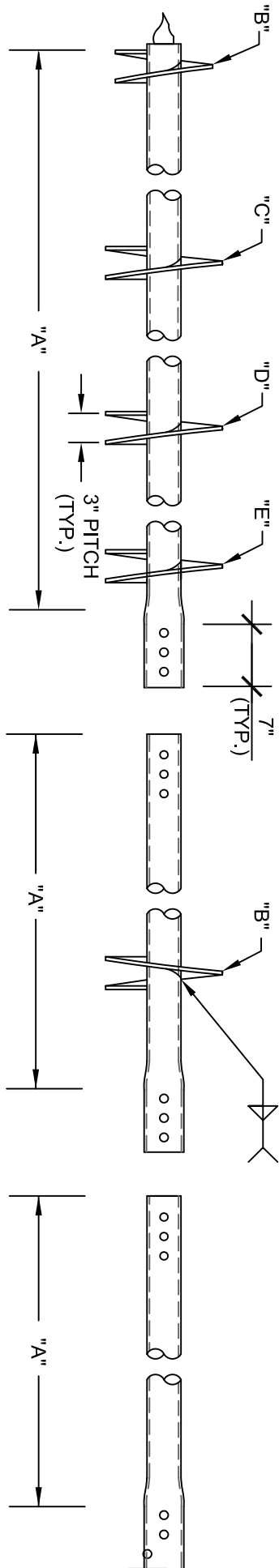


# 3.5" Ø HELICAL PILES AND ANCHORS - UPSET CONNECTION



LEAD SECTION

HELIX EXTENSION

EXTENSION

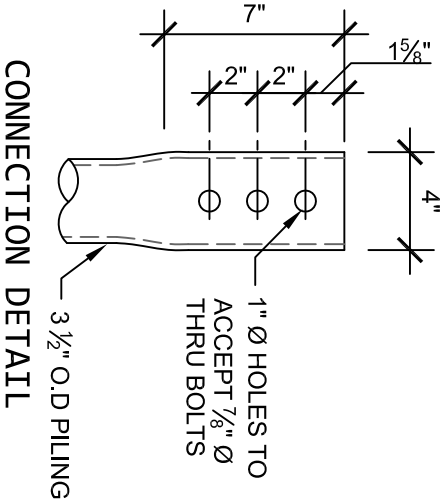
LEAD SECTION TABLE					
CAT. #	"A"	"B"	"C"	"D"	"E"
4607	5'-0"	8"			
4640	5'-0"	8"	10"		
4613	5'-0"	10"	12"		
4611	7'-0"	10"	12"		
4641	7'-0"	8"	10"	12"	
4617	7'-0"	10"	12"	12"	
RD.3047	10'-0"	8"	10"	12"	14"
RD.2461	12'-0"	8"	10"	12"	14"

\* MULTI-HELIX ARE SPACED 3 DIAMETERS OF THE LOWEST HELIX.

HELIX EXTENSIONS	
CAT #	"A"
8705.8	5'-0"
8705.10	5'-0"
8705.12	5'-0"
8707.10	7'-0"

EXTENSIONS	
CAT #	"A"
8705	5'-0"
8707	7'-0"
8710	10'-0"
8712	12'-0"

MECHANICAL TORQUE RATING - 14,510 FT-LB  
 ULTIMATE CAPACITY (COMP. & TENS.) - 101.6 KIP \*  
 ALLOWABLE CAPACITY (COMP. & TENS.) - 50.8 KIP \*  
 \*BASED ON A TORQUE FACTOR (Kt) = 7



CONNECTION DETAIL

**NOTES:**

- POLYETHYLENE POLYMER THERMOPLASTIC COATING PER ICC-ES AC 228. (GALVANIZED AND UNCOATED PILES AVAILABLE UPON REQUEST)
- LEAD AND EXTENSION SECTION LENGTHS ARE NOMINAL.
- SHAFT MATERIAL IS 3 1/2" O.D., 0.254" WALL, MINIMUM Fy=65 KSI AND Fu=76 KSI, ASTM - A500.
- HELIX BLADE MATERIAL IS HOT ROLLED, MINIMUM Fy=50 KSI AND Fu=80 KSI
- CARBON STEEL. PLATE THICKNESS IS AVAILABLE IN 3/8" AND 1/2" THICKNESSES.
- NOMINAL SPACING BETWEEN HELICAL PLATES IS THREE TIMES THE DIAMETER OF THE LOWEST HELIX.
- MANUFACTURER SHALL BE ISO 9001:2015 CERTIFIED.
- ALL WELDING IS TO BE DONE BY WELDERS CERTIFIED UNDER SECTION 5 OF THE AWS CODE D1.1.
- ALL COUPLING BOLTS TO BE 7/8" Ø, SAE J429 GRADE 8 BOLTS. (SAE J429 GRADE 5 IF GALVANIZED).

